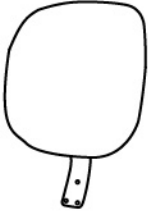
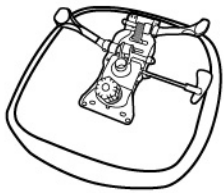
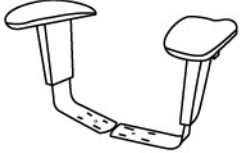





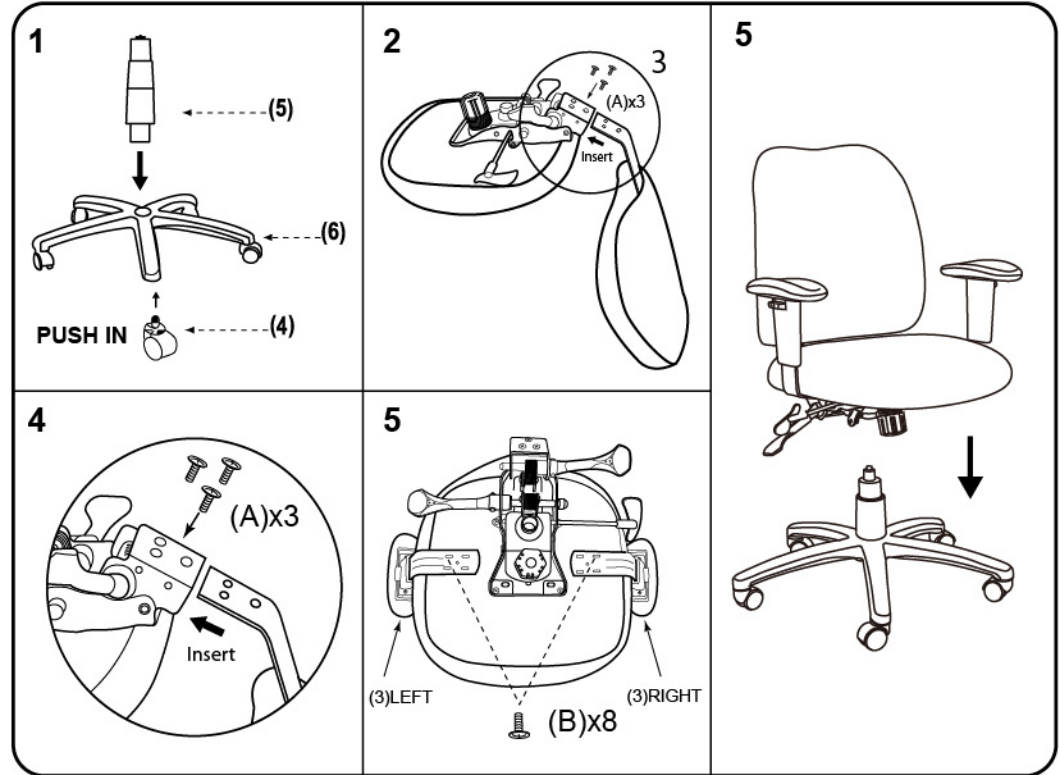


**IMPORTANT NOTICE:
HARDWARE PACKAGE IS ATTACHED
ON THE BOTTOM OF SEAT CUSHION.**

MODEL: B4006 D2-01 4AA168 B405

(1)x1	(2)x1	(3)x1 (L)x1 (R)
 Back Cushion	 Seat Cushion & Mechanism	 Left Arm & Right Arm
(4)x5	(5)x1	(6)x1
 Caster	 Gas Lift W/ Cover	 Base
<p>(A)x3  M8*18 L-BAR SCREW</p> <p>(B)x8  M6*22 ARM SCREW</p>		



Insert and loosely tighten all screws. When assembly is completed, fully tighten all screws before using. This chair is only intended for sitting. Any other use will void the warranty.

